

PANA 9600S Simply Unpacking Instruction Manual

1. Place the packed instrument on a smooth position.



2. With correct order, using the wrench to unpack the screws and nails on the instrument top and side, and also unpack the instrument shell.

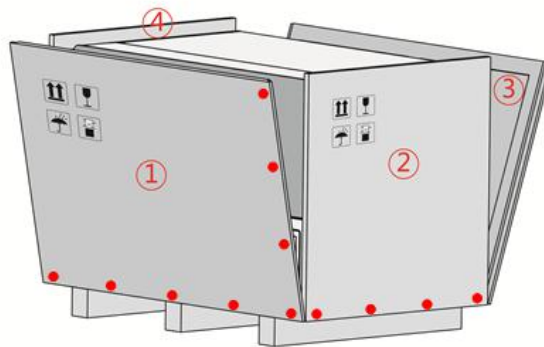


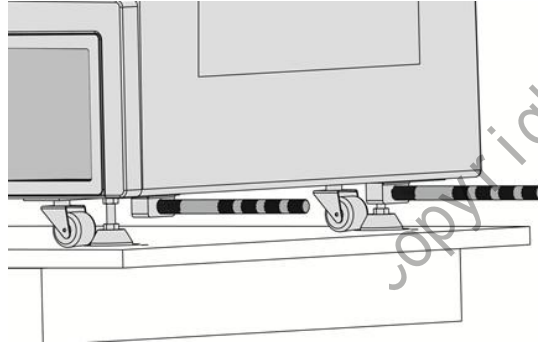
Figure 1. Unpacking instrument packing and shell, top board and side board.

3. Use a wrench to remove 4 fixed screws at the bottom, and get the pressing plate down;

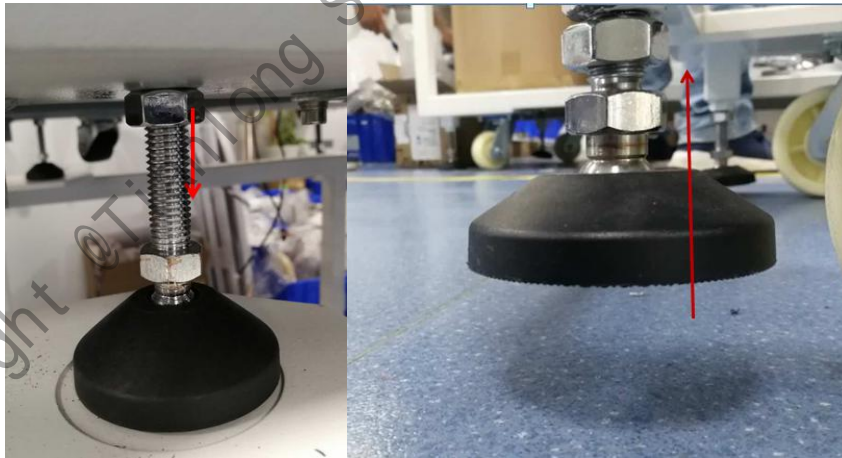


Figure 2. Tear down fixed pressing plate and screws

4. Twisting 4 hand shanks separately into the threaded hole of instrument on the bottom. Make sure hand shanks are through nuts, which in correct position.



5. Unscrewing the nuts from the feet, and use the wrench to tight 4 feet off the ground. Please be aware that , it's necessary to hold the instrument in this handling procedure to keep its balance.



6. Use the hand shank to lift instrument from board to smooth floor. In this process, at least 4 people needed to keep the instrument fixed.

7. Push the instrument to reserved position;

8. Make sure the table for holding instrument is steady and able to support 300KG weight.

9. Lift the instrument once again and place it on the table, keep it steady. Please pay attention that 4 feet should be lifted to avoid it can be moved and keep out of the table.



10. Tightening the top of the feet, and twist the hand shank.

11. Tear down the instrument film and open the cabin door, take off the adhesive plaster.

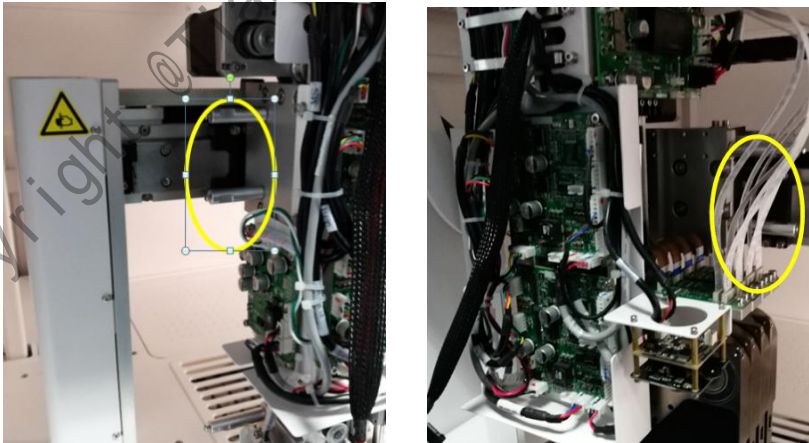
12. Loosing the screws on 2 sides of ADP covering, and then taking off the covering. It

is forbidden

To take all covering away. One person should support to hold the instrument during the whole process.



13. Arrange one more person to mainly responsible for tearing down the X axis transportation protection locks. Altogether 8 screws inside 2 parts.



14. After confirmation of ADP movement from left to right direction, tear down the Z axis lock of ADP, altogether 3 screws.



Install the ADP covering, tightening and fix the screws, be notice that ADP winding cannot be bending during this progress.

16. Lift 4 ADP, and move them to middle of X axis.

17. Take off the screws on each side of the operation boards, and tearing down the boards.

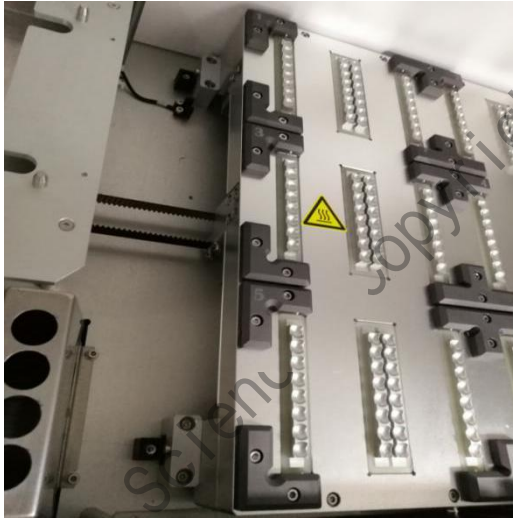
18. Take off the Y axis lock on left side, altogether 8 screws and 4 transportation protection locks.



19. Push the cantilever to 0 position along the Y axis, there are altogether 4 screws and 2 transportation protection locks after tearing down the y axis transportation protection locks.



20. For the tearing down part of horizon movement of transportation protection lock, altogether 2 locks and 6 screws.



21. Install the 2 boards on left and right side and tighten the screws.
22. Put the snap joint on the left board inside the instrument and tightening the screws.
23. After detailed inspection of all transportation locks tearing down status, and make sure the instrument is without any screws and locks now.
24. Power on the instrument.
25. Click on the power button, and the instrument is turning on. Open the 9600S software, insert in the password and login in the program, the instrument is on self-checking and restoration status, please look carefully and continue next step.